

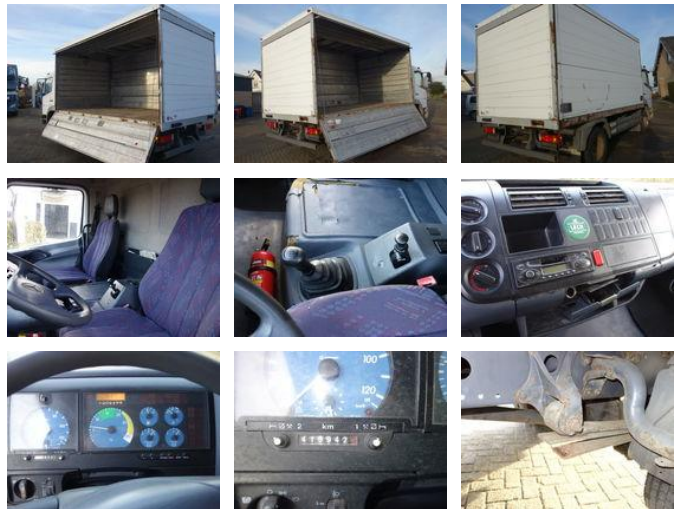


## SPRENGELMEIJER TRUCKS BV

# Mercedes-Benz ATEGO 1215 STEEL SPRINGS MANUAL GEARBOX

### General features

Brand	Mercedes-Benz
Subcategory	Box
Odometer reading	410.000km
Construction year	2001
Date of first registration	13-02-2001
Color	White
Condition	Used
General condition	Good
Fuel	Diesel



### Characteristics

Empty weight	5.050kg
Load capacity	7.000kg
GWV	11.990kg
Length	640cm

Width

250cm

# Mercedes-Benz ATEGO 1215 STEEL SPRINGS MANUAL GEARBOX

## Technical specifications

Number of axes	2
Axis configuration	4x2
Transmission	Manual
Engine output	150hp

## Description

MERCEDES 1215 ATEGO,STEELSPRINGS VERY GOOD DRIVING TRUCK,MANUAL GEARBOX

## Accessories

- Anti-lock braking system
- Leaf spring suspension
- Air horn